



\$527,500 (\$517,500 with FHOG)



4



2



2

LAND SIZE

294m²

HOUSE SIZE

19.47sq



Havava 19

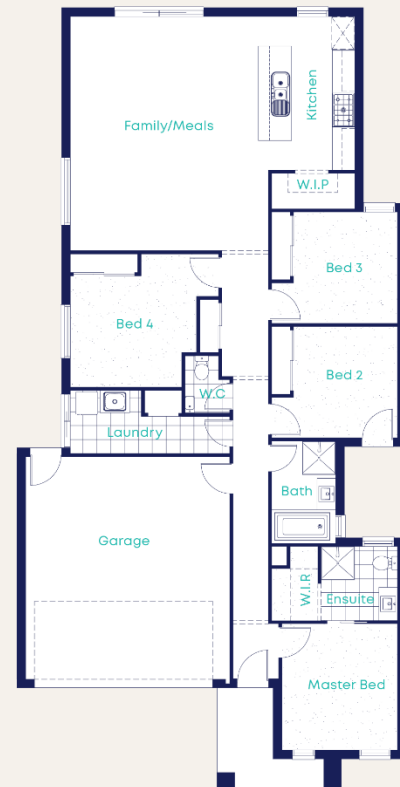
All 10.5m x 28m Lots,
Rockbank. VIC 3335

Full Turn Key Inclusions:

- ✓ Estate & Council Requirements
- ✓ Fixed site costs
- ✓ 6-star energy rating
- ✓ Featured Facades
- ✓ Front & Rear Landscaping
- ✓ Side & Rear Fencing
- ✓ Coloured Concrete Driveway & Porch
- ✓ Remote Controlled Garage Door
- ✓ 2590mm High Ceilings
- ✓ Heating & Cooling
- ✓ Window Furnishings
- ✓ Flyscreens & Window Locks
- ✓ Clothesline & Letterbox
- ✓ Stone Benchtops
- ✓ European Stainless Steel Appliances
- ✓ Quality Floor Covers Throughout
- ✓ Tiled Shower Bases
- ✓ Designer Bathroom Fixtures
- ✓ LED Downlights Throughout
- ✓ And Much More

For more info, contact Dennis Rabba:

M. 0425 292 555 E. dennis@avidahomes.com.au



DISCLAIMER: Whilst every endeavour has been made to ensure the accuracy of the information provided, all images and floorplans detailed in this marketing document are for illustration purposes only and to be used as a guide only. All fixed priced House & Land Packages are based on information provided by the land developer. Prices & availability are subject to change without notice. Avida Homes Pty Ltd is responsible for the sale of the building construction only. Please check with Avida Homes for more details on specifications and detailed drawings. Package prices do not include stamp duty or any other government charges. Avida Homes Pty Ltd reserves the right to substitute the make, model or type of any of the aforementioned products to maintain the quality and product developments of its homes. Changes may be subject to Residential Development Standards (Res Code Requirements) and energy rating requirements. Floorplans are based on Avida Homes standard facade. Sizes and setbacks may vary subject to façade selected. For more information speak with your Avida Homes sales consultant.